

Call for Exhibitors!!

ifia 国際食品素材/添加物展・会議
JAPAN 2027
International Food Ingredients & Additives Exhibition and Conference

25th

HFE 健康/機能性食品素材展・会議
JAPAN 2027
Health Food Exposition & Conference

May 19(web.) to May 21(Fri.), 2027

10:00am~5:00pm Tokyo Big Sight, South Hall& Conference Center

"Food Ingredients & Additives" -Approach Food Taste and Safety scientifically -

"Health and Functional Food Ingredients" - Approach Food functional and Health scientifically -

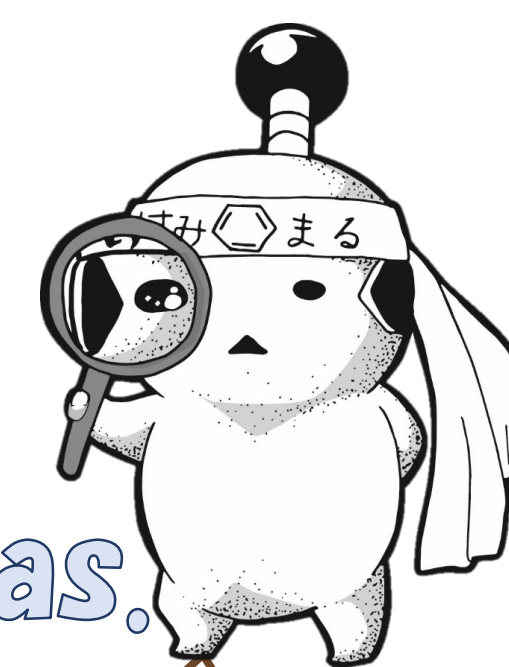
2027's Catchphrase

Finding the right materials to overcome the challenge!

- ❖ Tasting event-Inspiring Taste Street
- ❖ Food Safety and Science Area
 - ↳ Japanese Society of Food Chemistry corner
 - ↳ Analysis Corner
- ❖ Taste Exploration Area
- ❖ Industry-academia collaboration corner

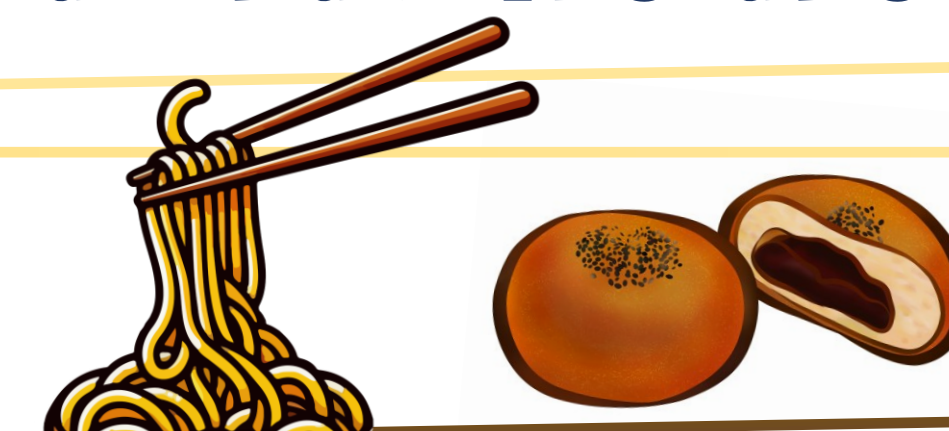
- ❖ Foods with Functional Claims developing food Products pavilion
 - ↳ OEM/Formulation Technology Corner
- ❖ Intestinal Environment and Health Area
 - ↳ Brain and Gut Beauty Corner

We are planning other attractive areas.



Main Target categories

Bakery, Noodle making, Pasta production, Confectionery



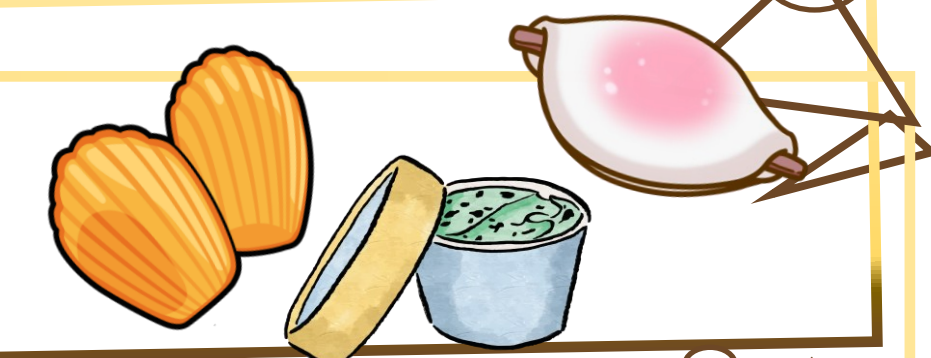
Beverage, Alcohol



Foods with functional claims



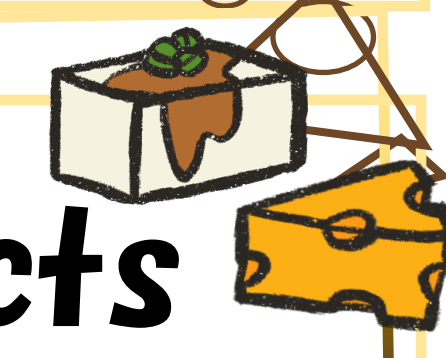
Western confectionery, Japanese sweets, Frozen dessert, Dessert



Marine processing products, Meat processing products



Pickles, Tofu, Soybean curd, Dairy products, Other chilled processed products



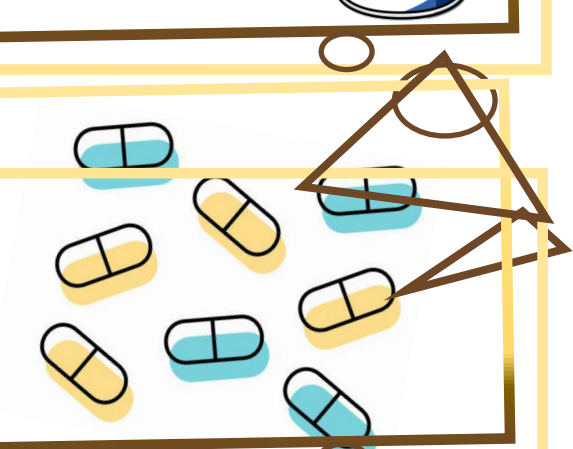
Prepared meal, Bento box, Ready-made meal, Delivery



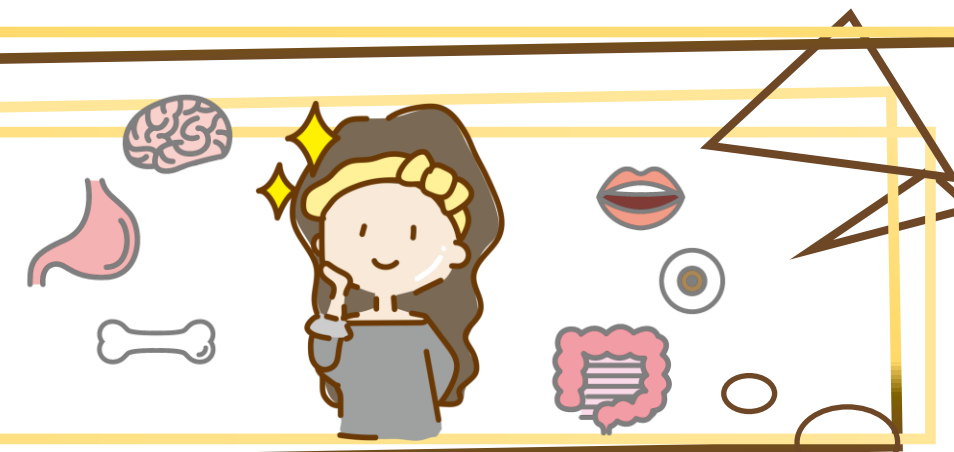
Processed foods, Retort pouches, Frozen food, Canned food, Freeze-dry food



Private Brand OEM, ODM, Manufacturing



Beauty



Nursing care, Elderly food



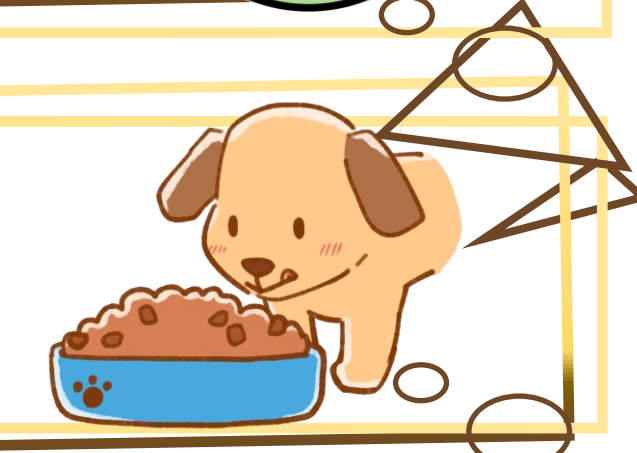
Food safety and Quality control



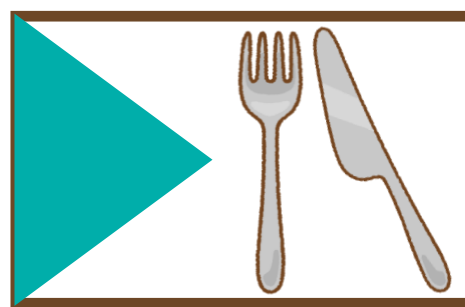
Foods with functional claims



Pet food



Main Exhibits: Amino acids, seasonings, spices and flavorings, extracts, herbs, sugars, oligosaccharides, carotenoids, collagen, ceramides, protein and fat substitutes, protein ingredients, oils and fats, starches, vitamins, peptides, minerals, emulsifiers, lactic acid bacteria, yeast, preservatives, shelf-life extenders, quality improvers, pH adjusters, analysis and testing, ODM, OEM, processing aids, contract testing, thickening polysaccharides, anti-fatigue ingredients, gut health ingredients, functional oils and fats, functional carbohydrates, ingredients for foods with functional claims, labor-saving, automation, and AI, management systems, colorants, tea, hygiene and sanitation, manufacturing equipment, certification and consulting, enzymes, acidulants, processed vegetables and fruits, joint care, dietary fiber, etc.

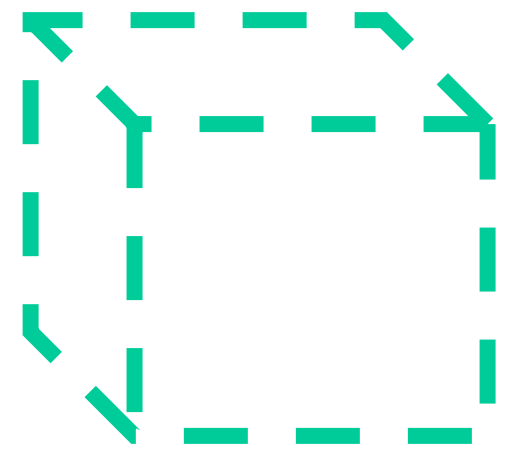


PRICE

※All prices include tax

⚠ Please note that cancellation fees will be charged from the day after application. The discount will be applied if half of the payment is made by the end of December 2026.

Raw space



Exhibition space only

▶ ¥462,000/booth(3mx3m 9sqm)

Application by Jul.31st
10% OFF booth fee

▶ ¥415,800

Application by Oct.31st
5% OFF booth fee

▶ ¥438,900

Package Booth (For 1 booth)

Exhibition space + basic decoration

▶ ¥605,000/booth(3mx3m 9sqm)

Application by Jul.31st
10% OFF booth fee

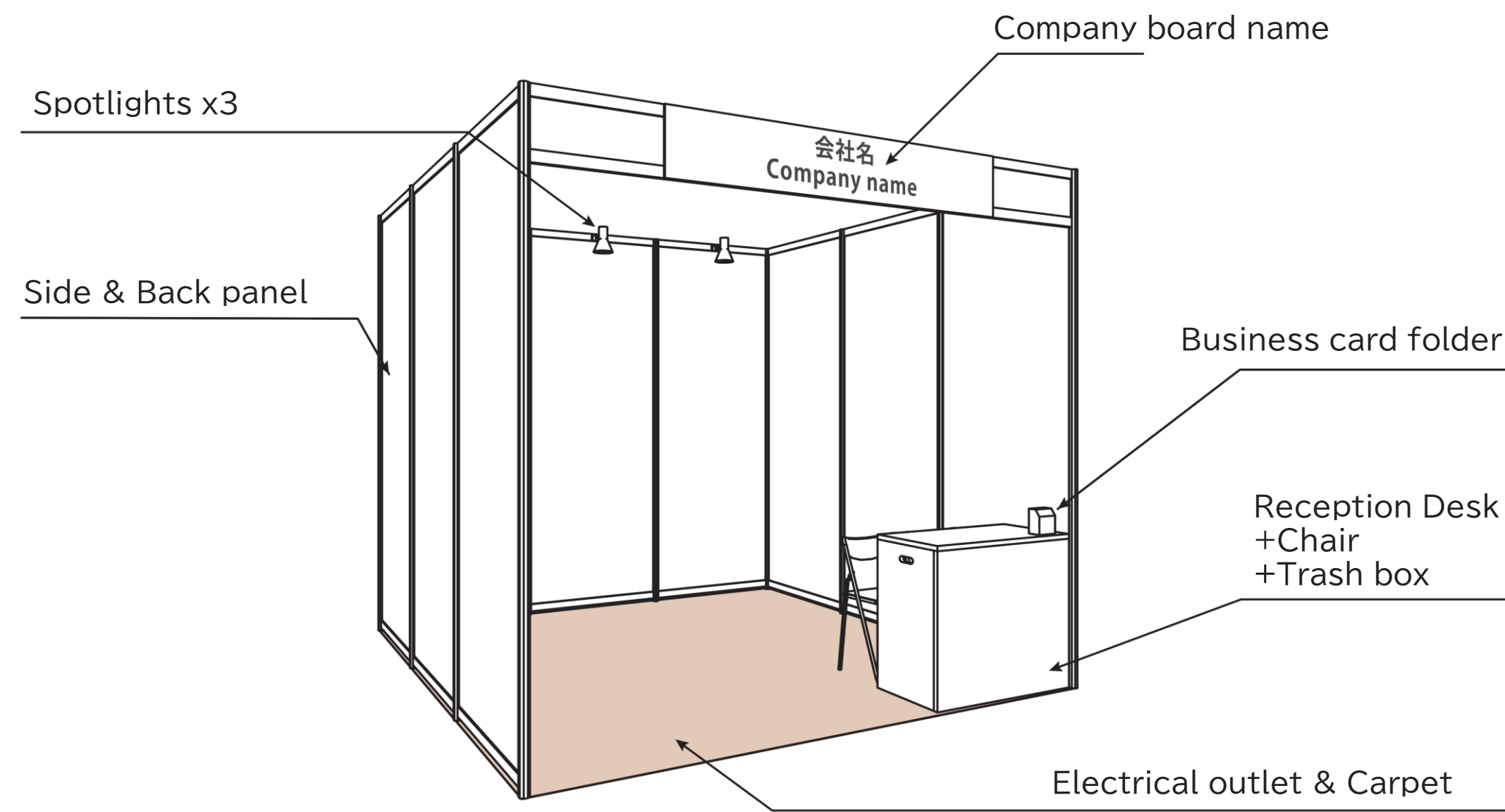
▶ ¥544,500

Application by Oct.31st
5% OFF booth fee

▶ ¥574,750

Included in the package booth fee

- Raw space
 - Company board name
 - Carpet
 - Side & Back panel(W297cm×D297cm×H270cm)
 - Reception Desk x1(W90cm×D45cm×H80cm)
 - Chair x2
 - Business card folder x1
 - 1 Electrical outlet(100v/800w,included power rate)
 - Spotlights x3
 - Trash box x1
 - Booth cleaning
- ※ Not panel production expenses.



Package booth + the following options

+ ¥77,000

- Exhibit counter
- LED Company name board

Package Booth(For 2 booths)

Exhibition space + basic decoration

▶ ¥1,188,000/booth(3mx6m 18sqm)

Application by Jul.31st
10% OFF booth fee

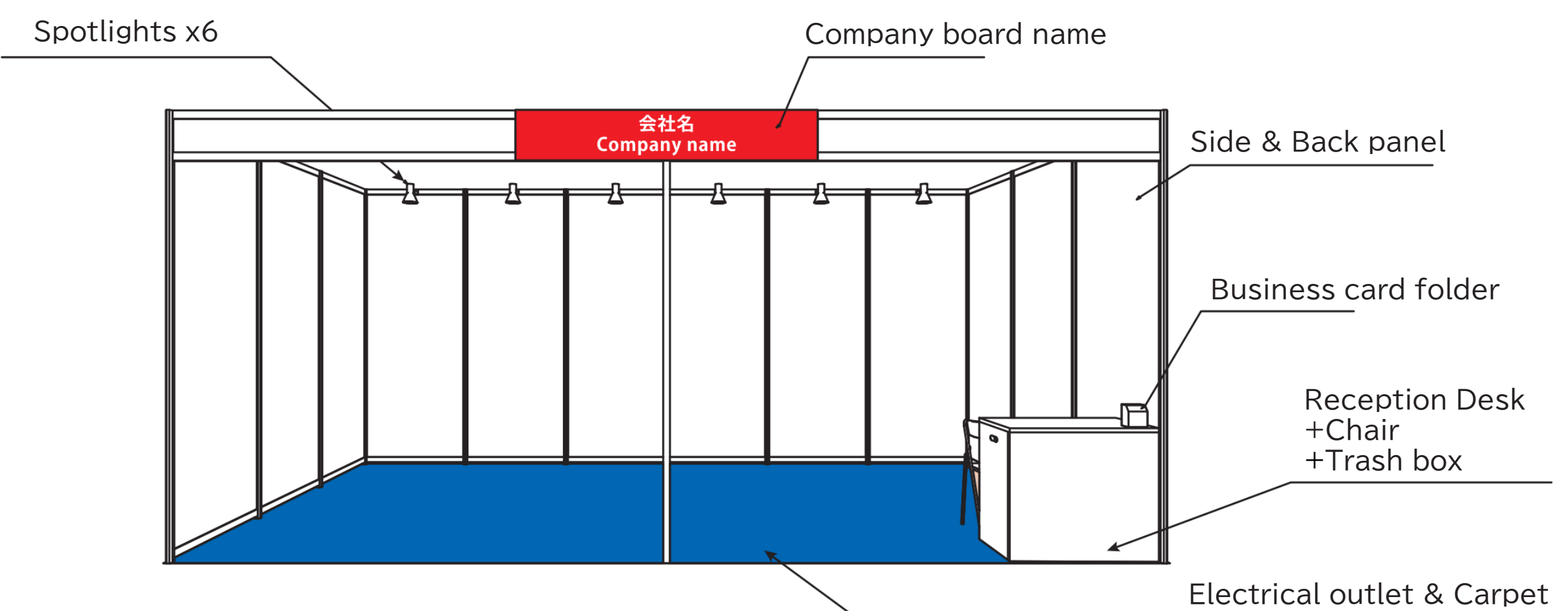
▶ ¥1,069,200

Application by Oct.31st
5% OFF booth fee

▶ ¥1,128,600

Included in the package booth fee

- Raw space
 - Company board name
 - Carpet
 - Side & Back panel(W594cm×D297cm×H270cm)
 - Spotlights x6
 - Business card folder x1
 - 2 Electrical outlet(100v/800w,included power rate)
 - Trash box x1
 - Booth cleaning
 - Reception Desk x1 (W90cm×D45cm×H80cm)
 - Chair x2
- ※ Not panel production expenses.



Semi-Designed Booth(2 Booths Model)

Exhibition space + decoration

▶ ¥1,441,000 /booth(3mx6m 18sqm)

Application by Jul.31st
10% OFF booth fee

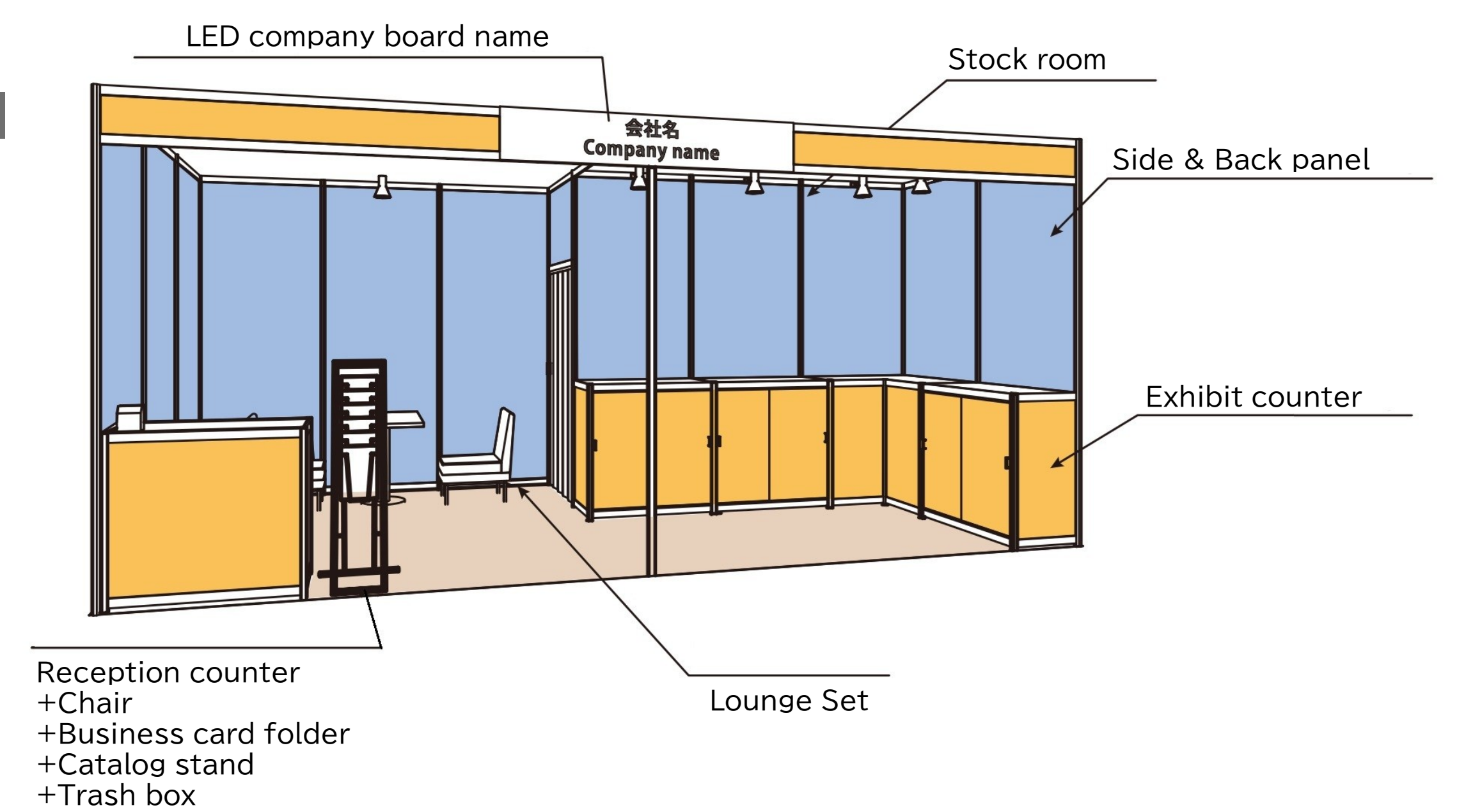
▶ ¥1,296,900

Application by Oct.31st
5% OFF booth fee

▶ ¥1,368,950

Included in the Semi-Designed Booth fee

- Raw space(3m×6m)
- Side & Back panel, Exhibit counter
- LED company board name
- Carpet
- Reception counter & Chair x1
- Business card folder x1
- Catalog stand & Trash box x1
- Stock room
- Lounge Set
- Spotlights x6
- Semi-Designed Booth cleaning
- 2 Electrical outlets(100v/800w,included power rate)



Mini Booth

Mini booth decoration

▶ ¥264,000/booth(2mx2m)

Application by Jul.31st
10% OFF booth fee

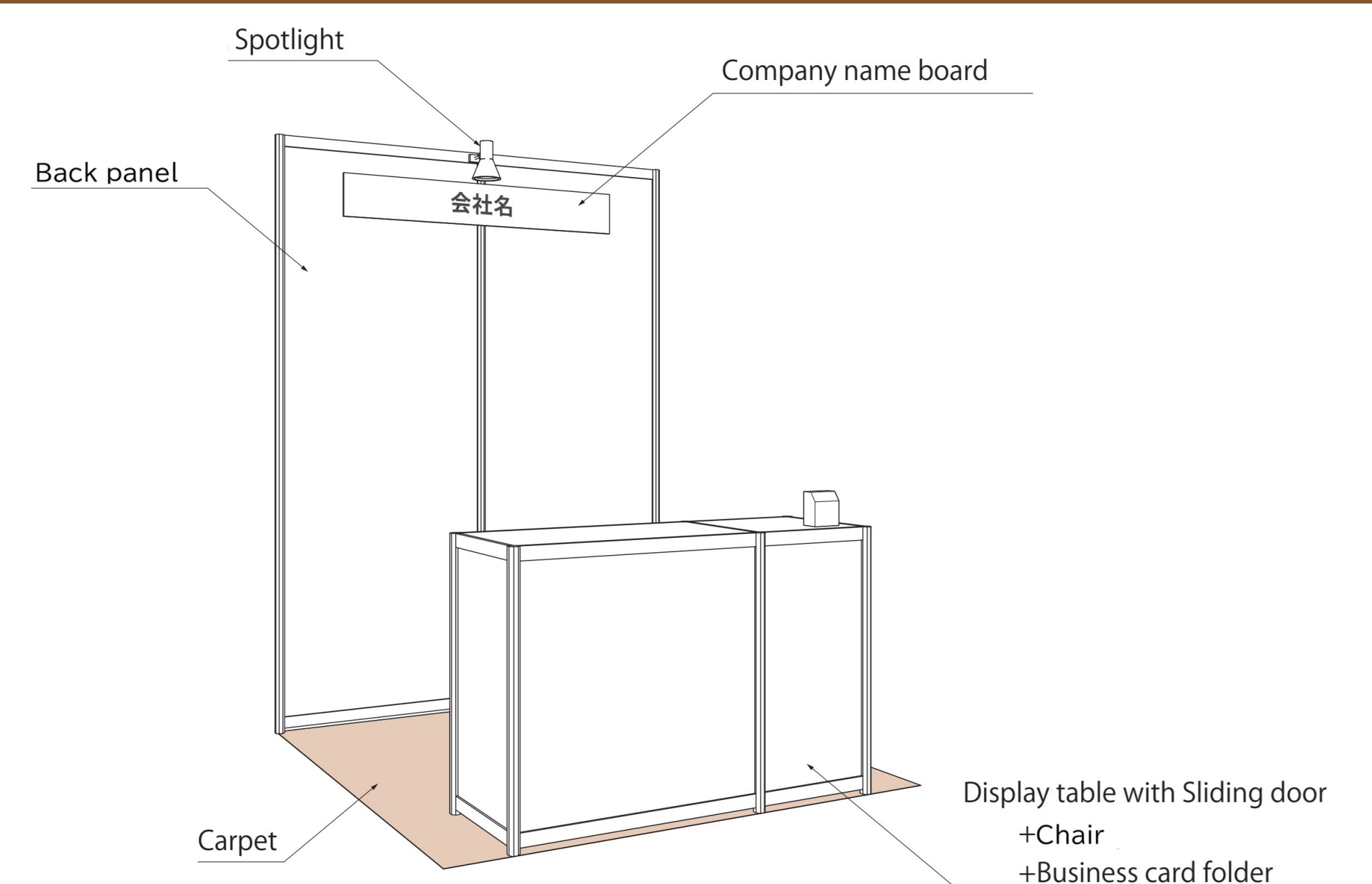
▶ ¥237,600

Application by Oct.31st
5% OFF booth fee

▶ ¥250,800

Included in the Mini Booth fee

- Raw space(2m×2m)
- Company board name
- Carpet
- Spotlight x1
- Business card folder x1
- Chair x1
- Back panel(W200cm×H270cm)
- Display table(W148.5cm×D49.5cm×H102cm)
- Mini booth cleaning
- 1 Electrical outlet(100v/800w,included power rate)
- ※ Not panel production expenses.



Corner location charge

▶ ¥22,000

Shared washroom

▶ ¥22,000

For further information, please contact us.

ifia/HFE JAPAN secretariat office (FOOD CHEMICALS NEWSPAPER INC.)
Shobunkan Bldg., 3-2-8 Kanda Jimbo-cho, Chiyoda-ku, Tokyo, 101-0051 JAPAN
TEL: +81-3-3238-7520 FAX: +81-3-3238-7898
Contact: ifia@foodchemicalnews.co.jp

ifia

